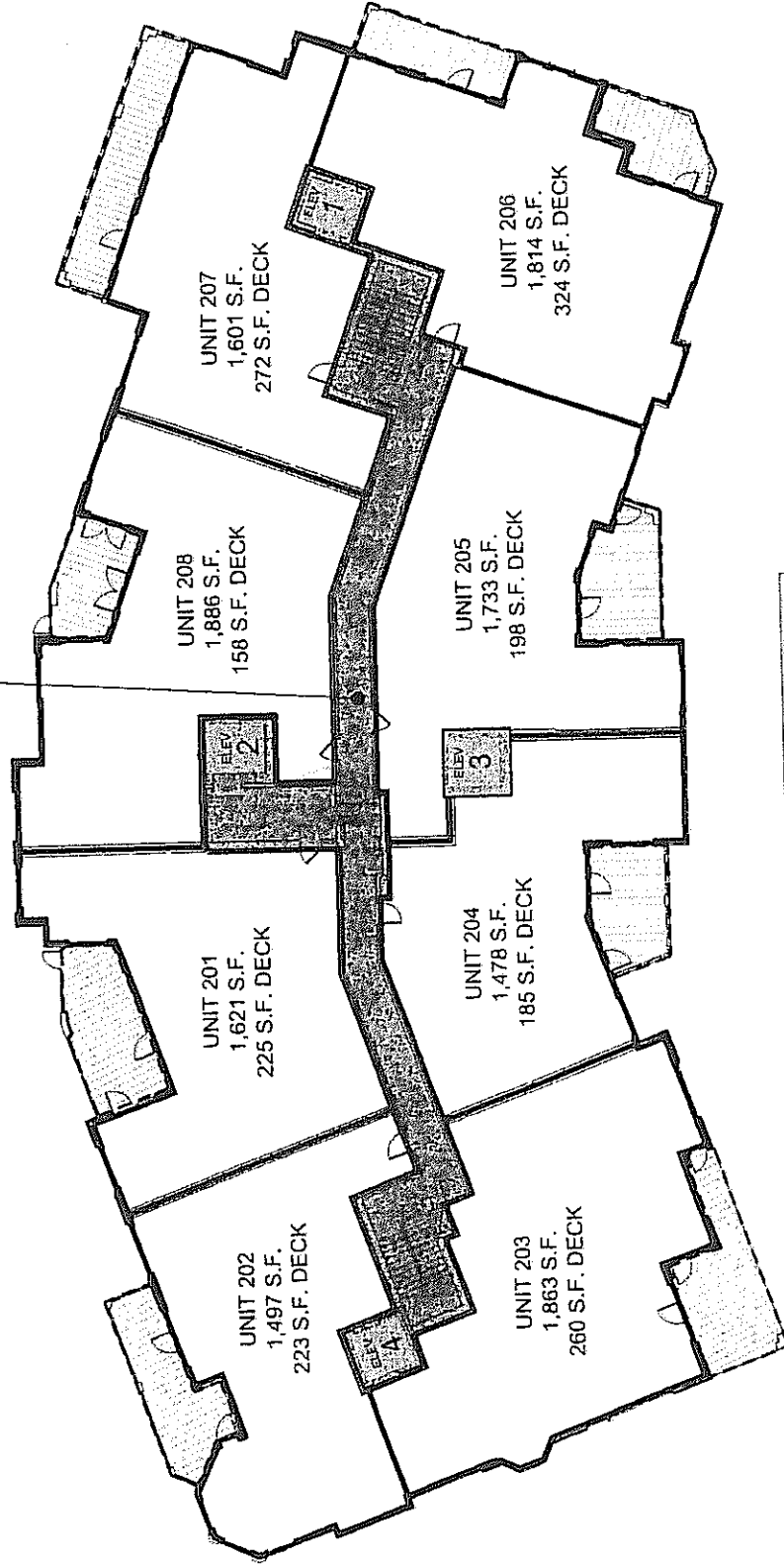
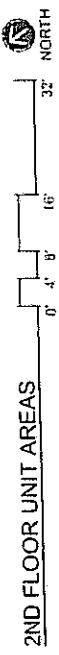




PUBLIC CORRIDOR  
985 S.F.



Information provided herein is for informational purposes only and is not intended to constitute an offer of any financial product. The information is provided for informational purposes only and is not intended to constitute an offer of any financial product. The information is provided for informational purposes only and is not intended to constitute an offer of any financial product.



2ND FLOOR UNIT AREAS

AREA CALCULATIONS  
DATE: APRIL 21, 2008  
BY: [Signature]

The Overlook @ Westover

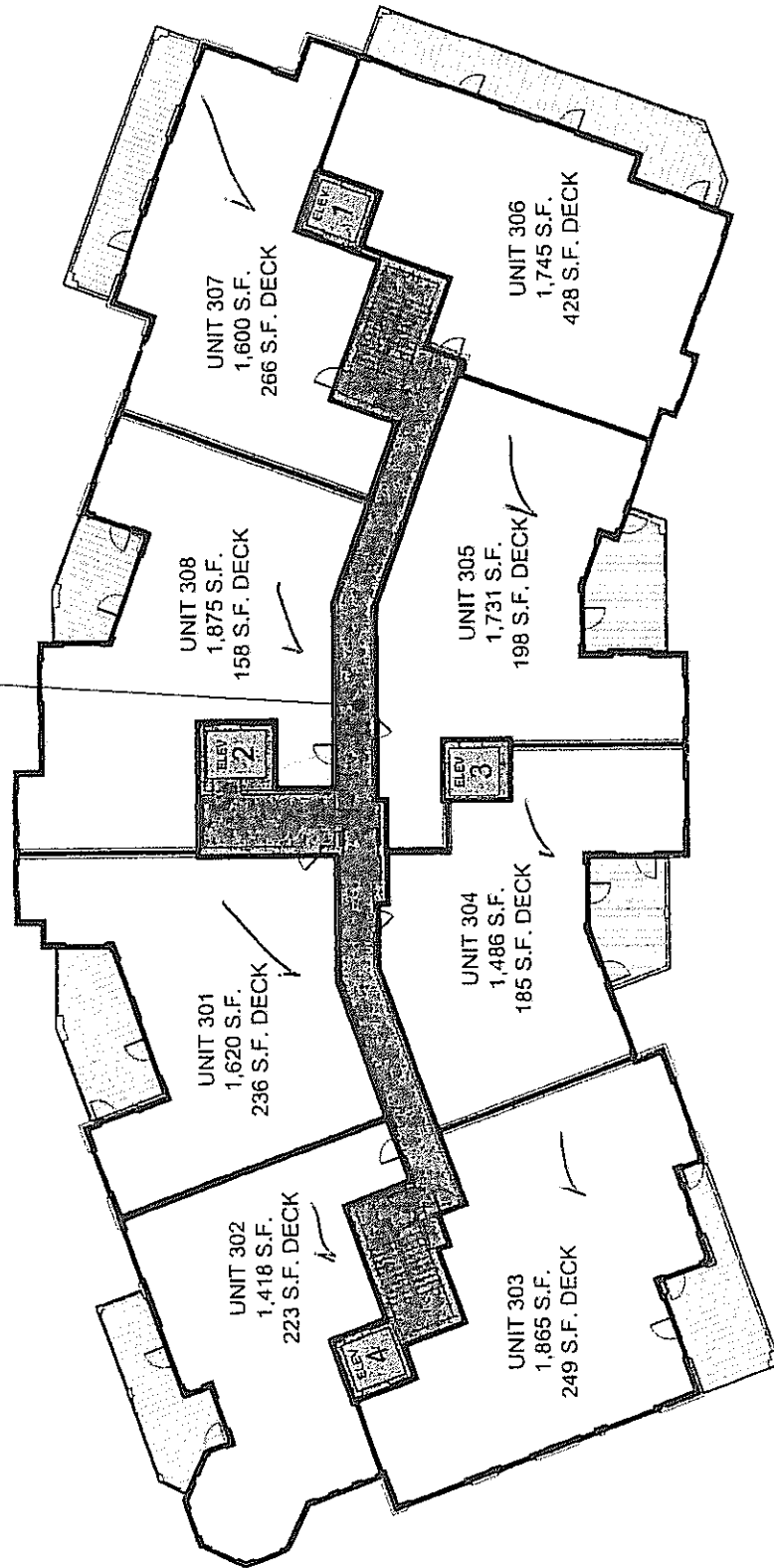
sixthriverarchitects  
3201 SOUTH CONGRESS STREET, SUITE 1300, AUSTIN, TEXAS 78746 | 512.356.9928

AUSTIN PARTNERS, LLC

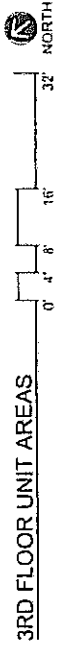
SAN ANTONIO, TEXAS



PUBLIC CORRIDOR  
985 S.F.



Information provided through these materials is preliminary in nature. Square footage calculation is based through the use of best practices at typical construction documents prepared by the architect. The information is not intended to be used for any construction of the project and is not to be used for any construction of the project. The information is not intended to be used for any construction of the project. The information is not intended to be used for any construction of the project. The information is not intended to be used for any construction of the project.



3RD FLOOR UNIT AREAS



sixthrivearchitects

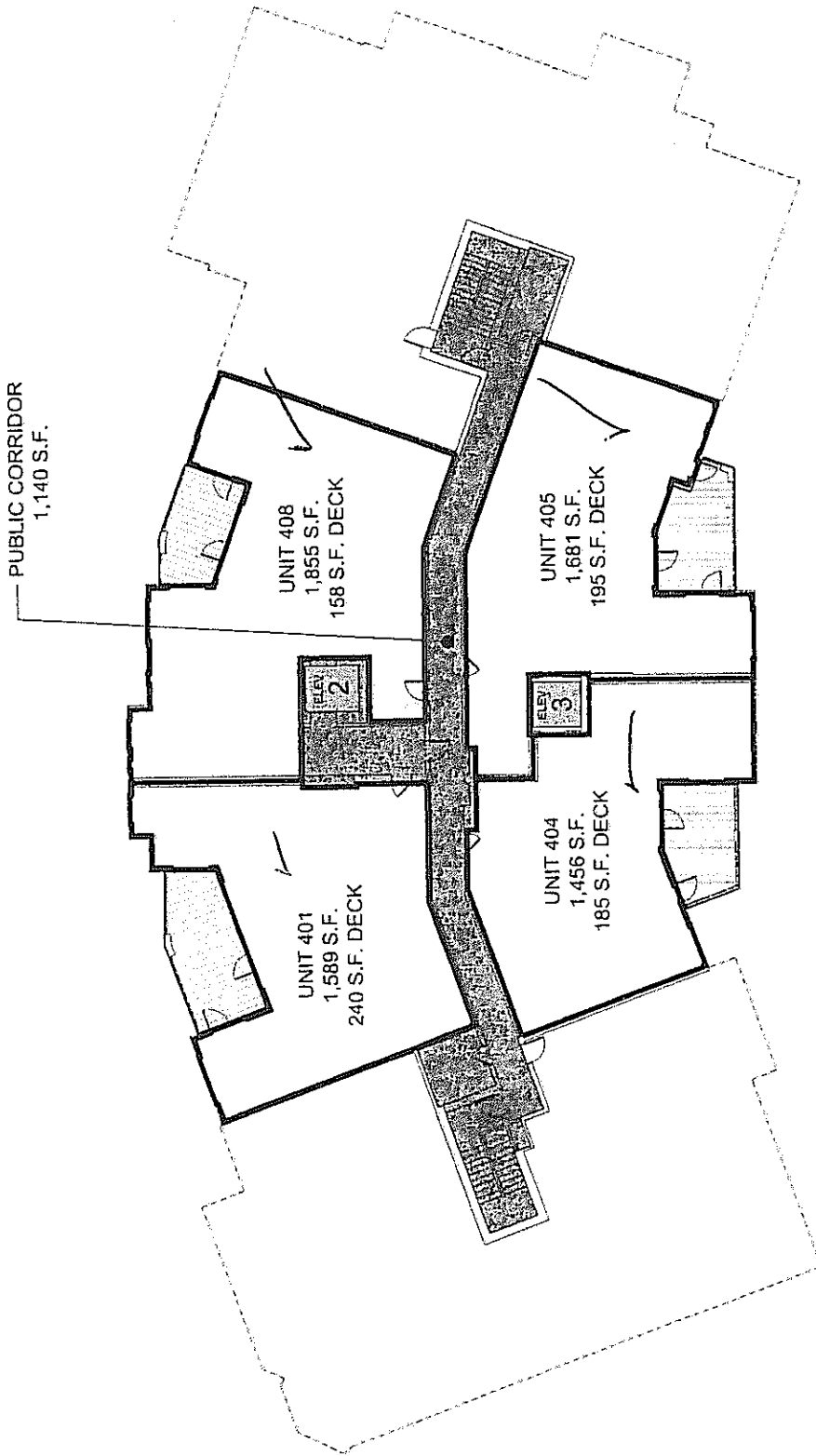
3100 South Congress Avenue, Suite 200, Austin, Texas 78704 312.256.9328

The Overlook @ Westover

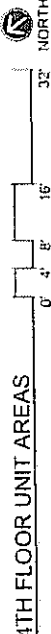
SAN ANTONIO, TEXAS

AUSTIN PARTNERS, LLC

AREA CALCULATIONS  
DATE: 03/20/2008  
DRAWN BY: J. H. ...  
CHECKED BY: J. H. ...  
DATE: 03/20/2008



Information provided through these methods is preliminary in nature. Source listing calculations were calculated from the use of hard copies of original architectural documents prepared by the architect. The architect has not verified the accuracy of the information provided. The architect is not responsible for any errors or omissions in this information and shall not be held liable for any damages, including consequential damages, arising from the use of this information. The architect is not responsible for any errors or omissions in this information and shall not be held liable for any damages, including consequential damages, arising from the use of this information.



4TH FLOOR UNIT AREAS

AREA CALCULATIONS  
 0185  
 APRIL 20, 2008  
 Austin Partners LLC  
 10000 N. Loop West, Suite 1000  
 Austin, Texas 78758  
 Copyright © 2008, sixthrivearchitects

The Overlook @ Westover

AUSTIN PARTNERS LLC

SAN ANTONIO, TEXAS

sixthrivearchitects

3601 S. Interchange Avenue Suite 3.501 Austin, Texas 78748 512.320.9228

